



# Field Study, Traveling Naturalist, Team Building & Retreat Services

# WOLDUMAR

for the naturally curious

The Woldumar Nature Association is a 501(c)3 nonprofit organization with a mission  
"To Educate People About the Natural Environment"





**Woldumar offers unique spaces and variety of experiences for:**

- **Student & staffing retreats**
- **Meetings**
- **Conferences**
- **Celebrations**
- **Full-day field studies**



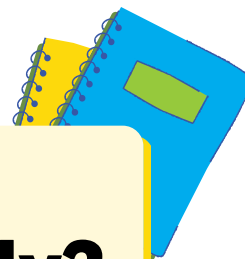
**Please contact us to customize your plan for: a full-day of science, recreation, team building, or a cross-curricular experience outdoors!**

Try a self-led field study with your class. Choose from themed bags or use your own lesson to explore Woldumar's property on your own!



- Themed bags include:
- WNC map
  - activity sheets
  - theme related vocab

# Study outdoors with Woldumar!



## What is a field study?

Using inquiry-based strategies and the outdoors as our classroom, students explore our ecologically diverse 180 acres and learn about plants, animals, history, and habitats.



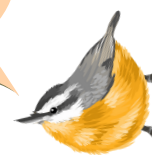
Woldumar's one- and two-hour Field Study programs engage students in educational activities, interactive lessons, and interpretive hikes designed to help teachers meet their learning objectives.

Since 1963, Woldumar has been a valuable resource for teachers. Please share your specific objectives and learning targets so we can help you meet your classroom goals this year!

Can't work a visit into your schedule? Our Traveling Naturalist program sends a Field Study program to you! Experience the natural world without leaving your classroom!

To schedule a visit or get more information please visit [woldumar.org](http://woldumar.org) or [email us!](#)

Special accommodations may be made to meet your unique classroom goals.

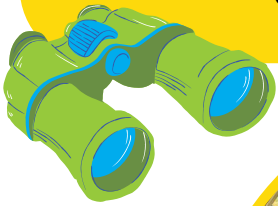


- NGSS aligned
- multi-class discount
- hands-on experience
- adaptable for various ages



# EXTENDED FIELD STUDY

Looking to supercharge your Field Study and explore the great outdoors? Look no further than Woldumar, where nature is your classroom!



## Fully Customizable!

Let us help you customize your trip to get the most out of your Woldumar adventure! Whether you are looking for a full day of fun with our naturalists or want to mix in your own curriculum, we've got you covered. You can choose to have one or two lessons each day with our naturalists.

## Great For All Seasons

Not only can your class hit the trails, you'll have the barn to return to use as your homebase. Enjoy the indoor space for lunch and any indoor activities you may have planned. Having the barn means no matter the weather, you're guaranteed to have a great trip!

## READY TO TAKE IT TO THE NEXT LEVEL?

Consider a multi-day Field Study and save on each additional day. And if you want to bring along extra classes, we have the potential to accommodate up to 4 classes at once.

# Field Study Programs

All are NGSS aligned

## Animal Homes & Niches

basic needs, adaptations, habitats

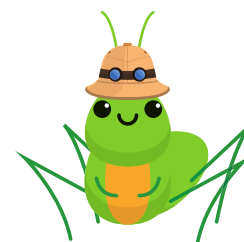
Explore the habitats at Woldumar and learn what animals need to survive. Investigate various animals' roles within the different habitats.



## Insect Safari

life cycles, pollination, insect anatomy

Are all bugs insects? What makes an insect an insect? Let's investigate and explore how and why insects are vital to our environment.



## Moon Cabin Exploration

Michigan history, basic needs

Step through the doors of Darius Moon's boyhood home and take a trip into the past. Compare life and resources from 1863 to the lives we live today.



## Nature Detectives

5 senses, adaptations, compare & contrast

Come along as we sleuth through the various habitats and compare and contrast our senses to the senses of animals that call Woldumar home.



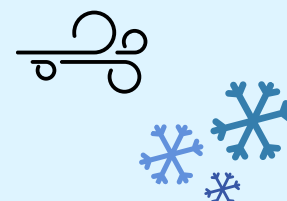
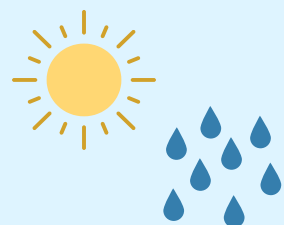
## Plants on the Move

plant anatomy, pollination, human impact

Float like a dandelion or burst like jewelweed as we investigate how plants survive and "move" via their seed dispersal methods.



Programs are held outside, so please come prepared for the weather. Woldumar staff monitors the weather closely and has policies in place for storms and high winds, and follows wind-chill recommendations.



# Field Study Programs

All are NGSS aligned

## Pond Exploration

life cycles, freshwater ecology, water quality

Students collect and classify pond inhabitants to explore pond ecology and aquatic life cycles. Use the findings to determine the water system's health.



## Reasons for the Seasons

climate, adaptations, migration vs hibernation

Why does Earth have seasons? How do plants and animals adapt to its patterns? Learn about wildlife and plant survival strategies.

## Waterdrop Adventures

water cycle, climate, pollution, geology

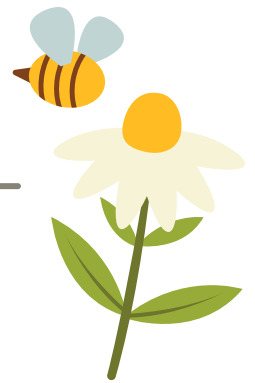
Travel through the water cycle, explore how water moves from one place to the next, and how it is affected by pollution.



## What's the Buzz?

ecological relationships, pollinator and plant parts

Let's get our hands dirty learning about the plants in our pollinator gardens. Explore the importance and variety of native plants and pollinators of Michigan.



## Wilderness Survival

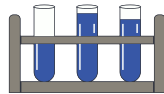
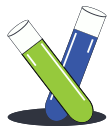
basic needs, critical thinking, prioritizing & planning

Learn to meet your own basic needs if you ever need to survive in the wild. What are ways animals fill their needs?

**Winter programs can receive FREE snowshoe instruction and use our classroom set of snowshoes! (restrictions apply)**



# Eco-Green



The Eco-Green program has students exploring local watersheds through hands-on chemical and macro-invertebrate testing. Use Eco-Green to enhance your natural science curriculum by studying biology, freshwater ecology, and more!



An Eco-Green experience involves visiting a local body of water to conduct water quality investigation and macro-invertebrate sampling.

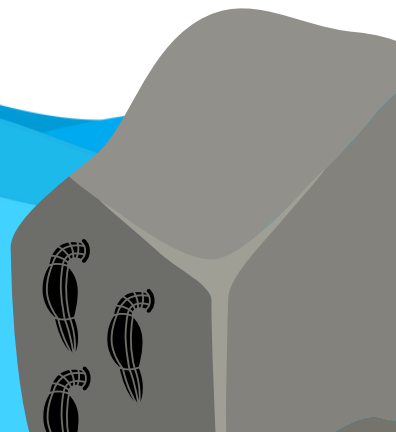


Pre- and post-visits are great to familiarize your students with testing and to interpret their findings.

Woldumar staff teach students how to use the sampling equipment, conduct the study, and interpret the results.



**Limited space available**



# Team building Retreats & Activity Courses



A minimum of ten participants may be in a group. Groups should consist of individuals in third grade or higher. Large groups may be split up for certain activities due to safety restrictions.

**Please reach out to [naturalist@woldumar.org](mailto:naturalist@woldumar.org) to book your team building experience today!**

Looking for a fun and creative way to grow as individuals and as a group? Explore our team building programs! With a two-hour minimum, our team building programs may be scheduled as a standalone event or choose from half or full day sessions to complement your other events, such as a company in-service or a day of stewardship.

These programs highlight each individual's contribution as an essential element of the group's success. Contingent on the predetermined goals of the group, outcomes for participants include improved communication, trust, cooperation, and a stronger sense of camaraderie.

Woldumar's experienced staff lead participants through a variety of mental and physical challenges designed to build and test bonds between group members. After each activity, staff begin facilitated conversations to relate the challenge to real-world application and life skills.



### **GROUP BUILDING ACTIVITIES (GBAs):** 3rd grade to adult.

Low risk challenges and games improve communication and cooperation. GBAs take place inside or outside and challenge individuals, encourage social development and effective teamwork. May be paired with Challenge Course.

### **CHALLENGE COURSE:** 5th grade to adult.

Medium perceived risk. Challenge activities constructed of cables or rope and wood. Participants spot for each other as they encourage, support, or lift teammates completing the challenge. Activities may involve balancing, lifting, or swinging. Safety instruction and warm-up activities are required prior to participation.



**Get your group on TRAC today!**

# Registration Information

**Program Fees:** Program fees are based on one classroom of up to 30 students. All school staff plus one adult chaperone per 4 students are included.

**Additional adults and non-infant siblings are \$5 each.**

One Hour Field Study: \$75 per class  
Two Hour Field Study: \$125 per class  
Self-Guided Field Study: \$30 per class

Traveling Naturalist  
One Hour Program: \$100 per class  
(Within Greater Lansing Area)

TRAC Team Building\*  
\$300 - Half Day  
\$450 - Full Day  
\*Student rates.

Full Day Options:  
Combine options and receive discounted rates!

## Extended Field Study Pricing

	1 Day	2 Days	3 Days	4 Days	5 Days
1 - 2 Classes	\$400	\$760	\$1080	\$1360	\$1600
3 - 4 Classes	\$750	\$1425	\$2025	\$2550	\$3000

To register, get more information, or assistance planning your visit, please visit [woldumar.org](http://woldumar.org), call (517) 322-0030 or email [programs@woldumar.org](mailto:programs@woldumar.org).

**A 10% Multi-Class Discount is applied when you book two or more classes at the same time!**

**Lunch/Snack:** Picnic areas are available for lunch or snack, but they are subject to availability and must be reserved when scheduling you visit. If indoor or covered space is required, rental rates may apply.

**Payment:** Payment is required before your program begins. Credit card payments are preferred. Checks made payable to the Woldumar Nature Association can be mailed to 5739 Old Lansing Rd, Lansing, MI 48917.

Go to [woldumar.org](http://woldumar.org) to schedule your visit!



**Woldumar is made possible by a generous community of supporters who believe in our mission "to educate people about the natural environment" and who understand the value of protecting and restoring local green space.**

There are many ways to get involved at Woldumar! In the coming year, please consider elevating your membership level, becoming a monthly supporter, joining our stewardship corps or a planning committee.

## **Become a Member**

Enjoy discounts to our programs, invitations to special activities, and free access to our trails.

## **Volunteer Your Time**

Share your time and talent in a way that matches your interests, skills and availability.

## **Donate to Woldumar**

Your gift ensures that we can continue to provide powerful experiences and opportunities for all.



## **Thank you!**

Woldumar Nature Association is a 501(c)-3 non-profit organization that is run by its members. We continue to exist because of the support of our faithful members, energetic volunteers and treasured donors.

Sitting on the Grand River with more than a mile of shoreline, Woldumar maintains over 5 miles of trails on over 180 acres of Maple and Beech woodland, tall grass prairie, and a pine plantation snuggled along 1.25 miles of the Grand River. Trails are open 365 days each year - we invite you to hike or ski on them anytime between dawn and dusk!

Each summer, Woldumar operates a summer program, Camp Discovery, which serves approximately 600 children, ages 4-16. In addition, our break camps, school programs, and community outreach serve over 25,000 children and adults every year.